



**Return to School Plan
2020-'21**

Revised 8/11/20

Specific procedures for WGS and WHS are in separate documents.

[District Calendar](#)

[WGS Reopening Plan](#)

[WHS Reopening Plan](#)

[FAQ Page](#)

[Remote Learning Request Form](#)

School year start date: Staff in-service days = Aug. 13-14
First day of student attendance = Aug. 17
Noon dismissal = Aug. 17
Remote learning orientation = Aug. 17 from 12:30-3pm
(or after 2:10 by appointment)

School day schedule: Mon-Fri, Doors open at 8:15, 2:10 dismissal
Noon dismissal Aug. 17

School format: Two options

1. 5 day per week in-person learning
2. A remote learning option is available to any district student. Remote learning will be different than it was in the spring of 2020. Specific details will come later.

Commitment: A commitment to in-person or remote learning is a commitment for an entire quarter. Students may only switch from one format to the other as a result in a change in a health condition, or with special permission from the building principal.

Special Mitigation Practices

<p>Masks All students and staff must wear a mask while at school or on the bus, per ISBE guidelines. Masks may be taken off outside if 6ft social distancing can be maintained.</p>	<p>Symptom Screening All students and staff will be screened, or must self-certify, before gaining entry to the building. Procedures will be announced at a later date.</p>
<p>Student Health Care Locations Students who are displaying symptoms and are waiting to be picked up will wait in a</p>	<p>Hygiene</p>

designated area separate from students seeking medication and other health needs.	Regular hand washing and hand sanitizer usage will be encouraged throughout the school day.
Water Bottles Students are encouraged to bring their own water bottle to school to fill at filling stations. All water fountains will be used for the purpose of filling bottles only.	Cleaning Cleaning products aligned with CDC standards will be used throughout the day in high-touch areas. Enhanced cleaning and sanitizing will take place at the end of each day.
Visitors/Volunteers Visitors or guests will only be admitted to the main office, must wear a mask, and may be screened.	Seating Charts Seating charts will be required on buses, in classrooms, and any other areas where students and staff may be present. Siblings will be seated together on buses when possible.
Buses All students will have assigned seats and must wear a mask while on the bus. The number of students on the bus will be reduced to under 50 passengers. Windows will be opened to allow for ventilation when possible.	Classrooms Changes will be made to classrooms to create more personal space where possible. Staff will minimize the sharing of supplies.

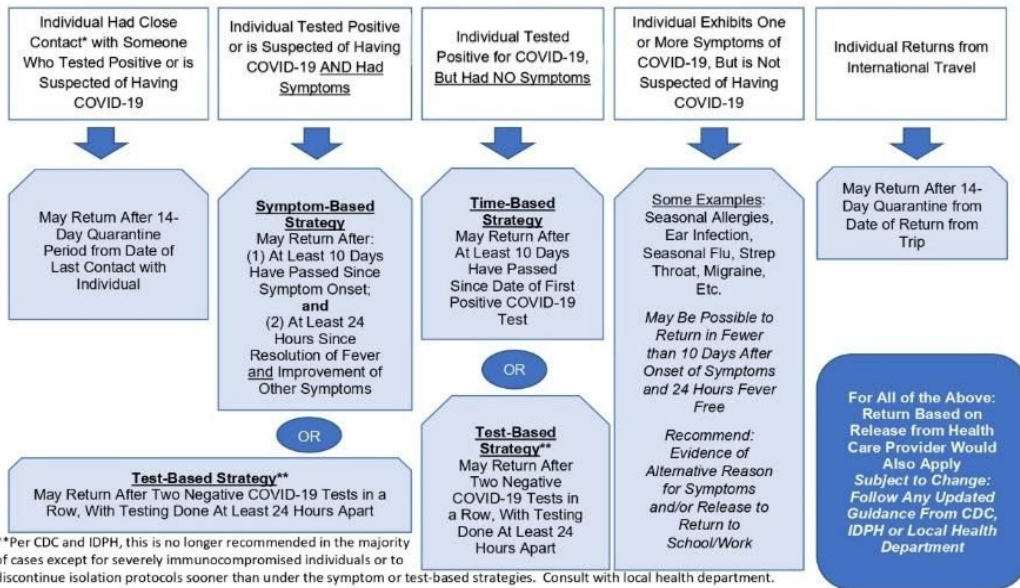
A frequently asked questions page can be found here.

https://docs.google.com/document/d/1FgiKNYbcY-qm5_zlFnteYO3_Zr_gOIQQ9OyMyiXyo/edit?usp=sharing

A document will need to be filled out for requesting the remote learning which can be found here.

<https://forms.gle/Ba8RbFecZ9mkVuPL6>

**RETURN TO SCHOOL/WORK FLOWCHART
FOLLOWING A COVID-19 RELATED ABSENCE**
Revised August 3, 2020



**Per CDC and IDPH, this is no longer recommended in the majority of cases except for severely immunocompromised individuals or to discontinue isolation protocols sooner than under the symptom or test-based strategies. Consult with local health department.

Robbins Schwartz

Although the information contained herein is considered accurate, it is not, nor should it be construed to be legal advice. If you have an individual problem or incident that involves a topic covered in this document, please seek a legal opinion that is based upon the facts of your particular case.
© 2020 Robbins Schwartz